



# GENERAL INFORMATION

Kulturladen e.V. Tel.: +49(0)7531/5 29 54  
Joseph-Belli-Weg 5 Fax: +49(0)7531/5 51 39  
78467 Konstanz Mail: info@kulturladen.de

## Capacity

Standing capacity 450 with seats about 140 seats, and about 40 standing

## Sound / Light

Availability of fixed house installation for sound and light

## Loading distance

Distance from car park to the stage approximately 20 metres with 6 steps

## Stage

Width of stage	6 m	Visible Width of stage	5 m
Depth of stage	5 m	height	1,15 m
Clearance height of stage	4,2 m		

## Backstage

1 room with a capacity up to 15 persons with direct access to the stage and bathroom including shower

## Car Park

Unfortunately we have far to less parking facilities for nightliner, minibusses and cars nearby. Therefore we would ask especially nightliner productions to come to an exact agreement with us. Arrival is not possible before 1 pm.

## Merchandising

We have a regular stand for merchandising in the entrance area right next to the backstage.

## Contact

Annelies Hell booking@kulturladen.de  
Magdalena Schweizer presse@kulturladen.de  
Tel.: +49(0)7531/5 29 54, Fax: +49(0)7531/5 51 39,  
Core worktime Monday til Friday. 11:00 AM - 5:00 PM

## Information

For any further information please visit our general homepage <http://www.kulturladen.de>  
You will find this information sheet as well as further information regarding general information about the Kulturladen, technology and a location plan under  
<http://www.kulturladen.de/Der-Kula/Technik-Infos.html>

## Kula's Hall of Fame

Apocalyptica, Element Of Crime, Fettes Brot, Fishmob, Guano Apes, Rammstein, Hans Söllner, Gentleman, La Brass Banda, Katzenjammer, Sportfreunde Stiller, AnnenMayKantereit and many more



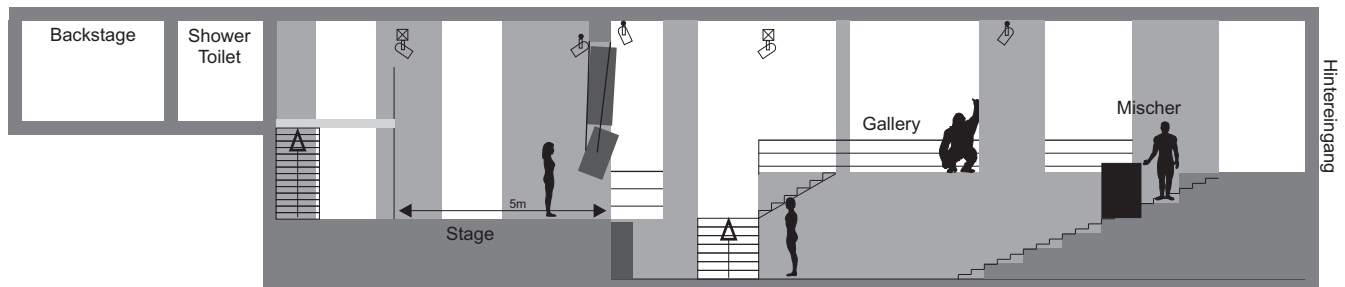
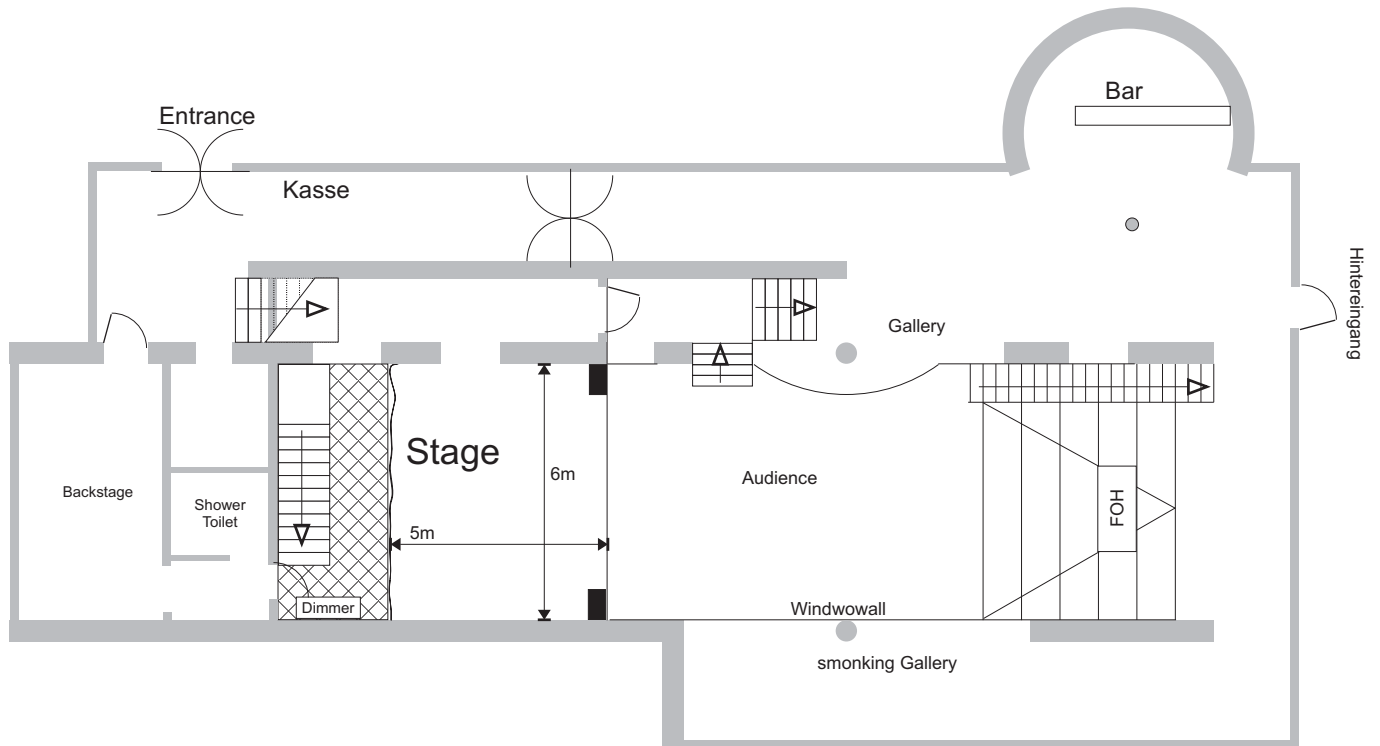
Main entrance



View from rear with backdoor (loading takes place here)

Last update: 17.3.2017

Source file: <http://www.kulturladen.de/Der-Kula/Technik-Infos.html>



View to the Stage with FOH and Dancefloor



View from Stage into Hall

## SOUND

### Front

Speakers	2	KS TXII Mid-Hi Stacks (activ)	fix installed
	2	Frontfill/LowMids Doppel 15" B&C /2" JBL	fix installed
Amping	1	RAM-Audio S6004 Frontfill	fix installed
Subwoofer	6	R <sup>2</sup> W18 Custom Kula (B&C 18TBW100 - 1000W/8Ohm)	fix installed
	2	PKNC XD5002	fix installed

### Monitoring

Speakers / Wedges	8	Wedges coaxial R <sup>2</sup> CX14M (B&C 14CXN76 - 400W/8Ohm)
	2	Subwoofer R <sup>2</sup> W1815 (B&C 18NBX100 - 1000W/8Ohm)
Controller/Amping	2	Xilica XP-4080
	2	RAM-Audio S6004

### FOH

Desk	1	Behringer X32
		32 Inputs, 16 Mix-Busse, analoges 32/10 Multicore Standart Preset: 6 Monitor, 3 Stereo-Goups and 4 FX

### Microphones / DI

dynamic	4	Shure SM 58	6	Shure SM 57
	2	Shure Beta 58	2	Sennheiser MD 421
	2	Sennheiser e609	4	Sennheiser e604
	1	Shure Beta 52a	1	AKG D112
wireless condensor	2	Shure QLX SM58		
	1	Shure Beta 91a	4	Rode NT5
	3	AKG C 1000	3	t.bone SC100
D/I-Box active	2	BSS AR-133	2	LD Systems LDI 02
D/I-Box passive	4	Atelier der Tonkunst	1	Stage Line (4 channel)

### DJ-Equipment

Dj-Mixer	1	Pioneer DJM-600
Plattenspieler	4	Technics 1210 MK2 mit Orthofon-Systemen
CD-Player	2	Pioneer CDJ-350

### Power

1 CEE 32 A	PA und Backline
------------	-----------------

### Local Technician

Uli Straßner  
 Tel.: 07531/9 91 43 91 Fax.: 07531/5 51 39  
 Email: technik@kulturladen.de

## LIGHTS

House		complete dimmable from FOH Position	
Desk	1	Zero88 Solution	
Dimmerchannels	30	Zero88 2kW	fix installed
	6	Ultralite 2 kW	fix installed
	12	Zero 88 1 kW	Disco
Backtruss	4 * 4	Par 64 (CP 60, CP 61)	fix installed
	2 * 8	ACL-Par36	fix installed
	2 * 2	DWE-Par36	fix installed
	1	Profilspot (fix Focus)	fest installiert
2"-Pipe	4	LED Wash GLP Impression 4Xs	fest installiert
(about 1m in Front of the Backtruss)	1	Stroboskop 1500W	fest installiert
Front - Edge of the Stage	2 * 4	Par 64 (CP 62)	fix installed
	3	Fresnel 1 kW	
Fronttruss above Audience	2 * 4	Par 64 (CP 62)	fix installed
	3	Fresnel 1 kW	
Floorspots	2	Par 64 short (CP 61)	
	8	Par 56 T-300 (300W)	
	4	LED Wash GLP Impression 4Xs	
	6	EuroLite LED Bar RGB 252/10	
Discolight	2 * 4	Par 64 (CP 87, CP 88)	fix installed
	6 * 4	Par 36 (ACL-like)	fix installed
Fog/Haze	1	Hazer Look UNIQUE 2.1	
<b>Colour Geels (LEE)</b>			
1027	Medium Red	101	Yellow
106	Primary Red	113	Magenta
116	Medium Blue Green	117	Steel Blue
120	Deep Blue	124	Dark Green
132	Medium Blue	135	Deep Golden Amber
141	Bright Blue	154	Pale Rose
162	Bastard Amber	164	Flame Red
179	Chrom Orange	181	Congo Blue
201	Full CTB	204	Full CTO
104	Deep Amber	115	Peacock Blue
		119	Dark Blue
		126	Mauve
		139	Primary Green
		158	Deep Orange
		165	Daylight Blue
		182	Light Red

### Power

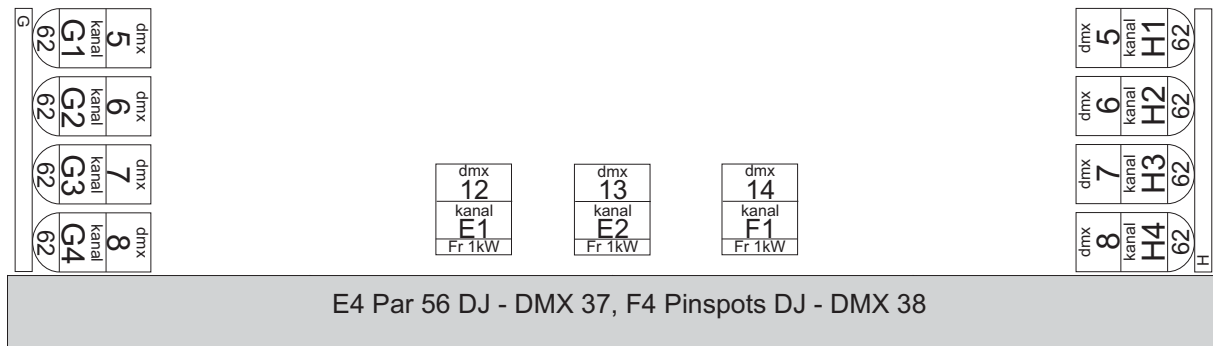
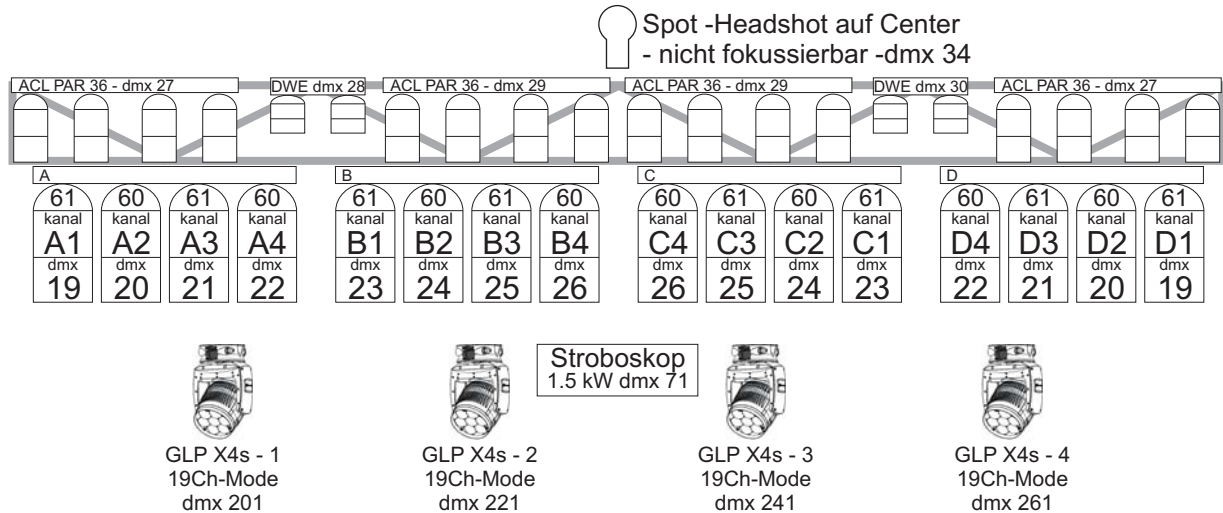
1	CEE 63 A	Lights
1	CEE 16 A	available

### Local Technician

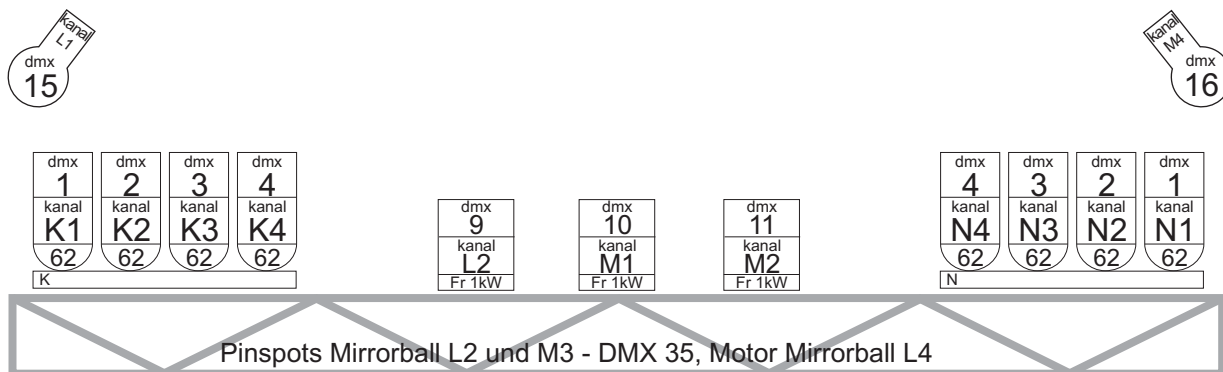
Uli Straßner  
 Tel.: 07531/9 91 43 91 Fax.: 07531/5 51 39  
 Email: technik@kulturladen.de

## LIGHTPLOT

### Backtruss



### Front - Edge of the Stage



### Fronttruss above Audience

## LIGHTS

### DMX-Adressen

1-30 Dimmer 5 \* Zero88 Betapack 3  
31-36 Dimmer Ultralite  
37-60 Dimmer 6 \* Zero88 Delta 1kW - Disco  
61-66 Dimmer Disco-Pinspots & Houselight  
67-68 LED Pinspot auf Halbmirrorball  
69-70 LED Pinspot auf Halbmirrorball  
71-78 Strobe-Controller DMX-10V  
79-80 Hazer Look UNIQUE 2.1

101-112 Eurolite LED Bar RGB 252/10 - 1  
113-124 Eurolite LED Bar RGB 252/10 - 2  
125-136 Eurolite LED Bar RGB 252/10 - 3  
137-148 Eurolite LED Bar RGB 252/10 - 4  
149-160 Eurolite LED Bar RGB 252/10 - 5  
161-172 Eurolite LED Bar RGB 252/10 - 6

201-219 LED Wash GLP Impression 4Xs - 1  
221-249 LED Wash GLP Impression 4Xs - 2  
241-259 LED Wash GLP Impression 4Xs - 3  
261-279 LED Wash GLP Impression 4Xs - 4

301-319 LED Wash GLP Impression 4Xs - 5  
321-339 LED Wash GLP Impression 4Xs - 6  
341-359 LED Wash GLP Impression 4Xs - 7  
361-379 LED Wash GLP Impression 4Xs - 8

DMX 31, 32 und 33 Floor-Spots  
DMX 35 Pinspots Mirrorball-Dancefloor  
DMX 36 free Dimmer  
DMX 71 1.5 kW Strobe Stage  
DMX 75, 76, 77 und 78 Strobes Dancfloor

### Strobe-Controller DMX-10V:

DMX-Wert 0-249 Rate  
DMX-Wert 250-255 single Flash

### Pinspot Halbmirrorball Eurolite LED PST-15:

DMX 67/69 Ch 1 Shutter  
DMX 68/70 Ch 2 Dimmer

### Hazer Look UNIQUE 2.1:

DMX 79 Ch 1 Pumpe  
DMX 80 Ch 2 Ventilator

### Eurolite LED Bar RGB 252/10:

Adressierung: DIP 10 ON, DIP 1-9 Adresse

#### 12-Kanal-Modus

CH 1 Dmx-Wert 1-15 startet 12 Kanal-Modus  
CH 2 Dimmer  
CH 3 Flash  
CH 4/5/6 RGB-Modul 1  
CH 7/8/9 RGB-Modul 2  
CH 10/11/12 RGB-Modul 3

#### 6-Kanal-Modus

CH 1 Dmx-Wert 16-30 startet 6 Kanal-Modus  
CH 2 Dimmer  
CH 3 Flash  
CH 4/5/6 RGB alle Module

### LED Wash GLP Impression 4Xs:

High Resolution (Extended) - Mode  
19 DMX Channels

CH 1 Pan  
CH 2 Pan fine  
CH 3 Tilt  
CH 4 Tilt fine  
CH 5 Red  
CH 6 Red fine  
CH 7 Green  
CH 8 Green fine  
CH 9 Blue  
CH 10 Blue fine  
CH 11 White  
CH 12 White fine  
CH 13 Shutter  
CH 14 Dimmer  
CH 15 Dimmer fine  
CH 16 Zoom (0 Wide, 255 Spot)  
CH 17 Special (0-3 Pattern, 250-255 Reset)  
CH 18 Pattern (0-2 No-Pattern, 3-253 predef.  
Pattern, 254-255 Pattern Byte 1)  
CH 19 Pattern Byte 1